

ASCII-Char

Copyright 1987 Jim. Leitch.

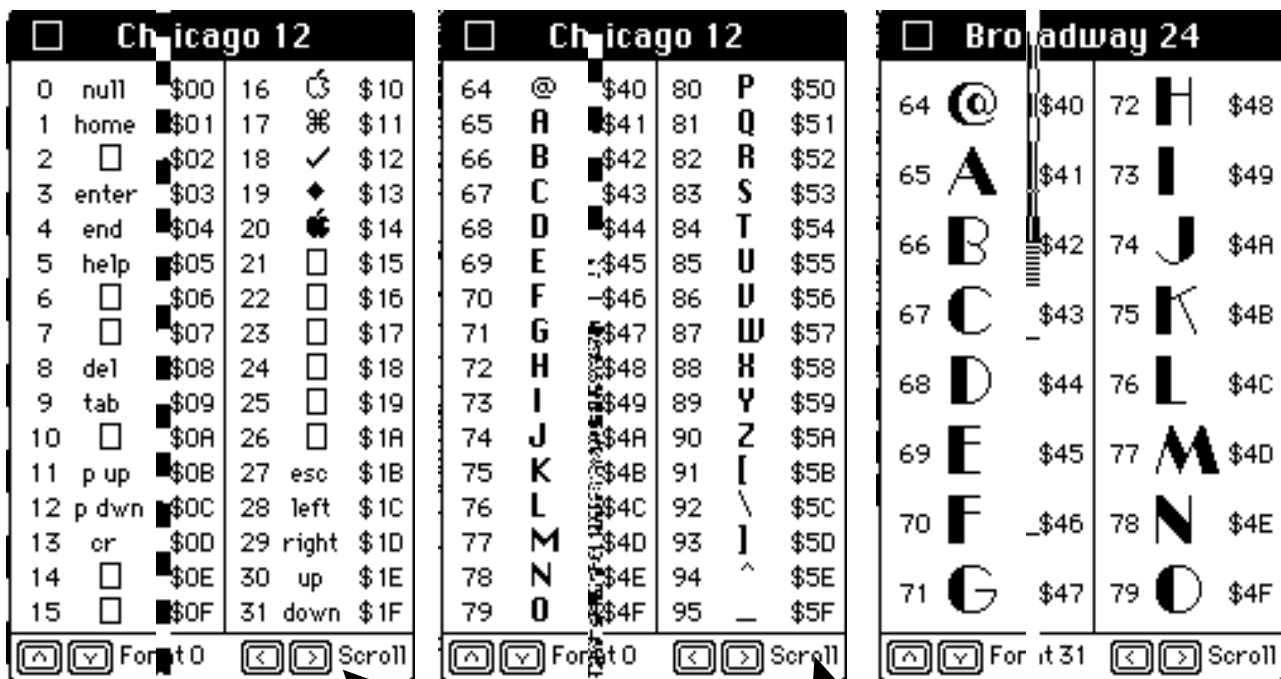
Decimal & Hex codes of all characters of all fonts*.

Comes as Desk Accessory and as Application.

DA only 6k, Application 7k.

Friendly to Mac, Mac+, MacSE, MacII & Multifinder.

In Glorious MacII Color.



ASCII values returned by cursor keys etc.

Decimal & hex. values of all characters.

12 pt. is displayed if available. Sizes larger than 16 pt. show 16 characters per page.

Shift & cursor key jumps 10 fonts.

Shift & cursor key jumps 4 pages.

Click here to toggle color on/off.

General

This program is available as an Application and as a Desk Accessory.

It provides a table which will display all the characters and their decimal and hexadecimal equivalents. It also provides a quick method to find the whereabouts of specific or unusual characters.

Initially written as an ASCII to character table programming aid, the font scanning was added to quickly view all fonts and their characters.

The Key Caps DA allows you to find what key to press for a given character but does scale and distort, or crop larger font sizes. I use them both.

Operation

The pages can be scrolled and the fonts scanned either clicking on the buttons or using the arrow keys. Holding the shift key and clicking or pressing a cursor key will will jump four pages or ten font numbers. Should that font number be vacant, the next available font will be displayed.

* The application version will only display fonts installed in the system file and in a Suitcase folder.

* Except when using Multifinder, the DA version will display the system fonts, the Suitcase fonts and application internal fonts.

Screen Position Both versions of ASCII-Char store the location on the screen so that next time they are opened, they will appear where you left them. The DA version must have been used, a button clicked, in order for it to remember a new location. Quitting them with their window partially outside the desktop will cause them to come up next time in an upper left default location.

Font Size

If 12 point exists, the font characters will be displayed in that size. The one exception to this is the application font (Geneva , font 1) which is displayed in 9 point.

When the smallest size of a font is greater then 16 point, sixteen characters will be displayed on each page.

Color

The table will be in color if available. The color can be toggled on & off by clicking on the word '**scroll**'.

Memory Size

In multifinder, the Application Memory Size defaults to 256k. This can be reduced to 50k where memory is tight. Select the ASCII-Char icon, then select Get Info from the File menu and change the value. With the Application Memory Size reduced, the page drawing will become rather slow.

Multifinder

When running Multifinder and with limited in DA slots, the application may be a better choice.

Not only will it be as accessible as a DA, the application is multifinder friendly. When running as the foreground application, it will **not** steal time from any background programs other than when a button is clicked.

All Desk Accessories steal time even just sitting idle.

Written in LightSpeed C by Jim Leitch, Toronto, Canada.

CIS 70416,1532 Phone 416 498 0828 (There most of the time except in the summer.)